

**LET'S
CREATE A
SUSTAINABLE
WORLD
TOGETHER**



Alam Flora Environmental Solutions Sdn Bhd

Level 2, EON Head Office Complex,
No. 2, Persiaran Kerjaya, Seksyen U1,
40150 Shah Alam, Selangor Darul Ehsan

P: +603-7803 0518 F: +603-7803 0137 TF: 1-800-88-3437



AFES Sdn Bhd



afessdnbhd



AFES Sdn Bhd



www.afes.com.my



AFES Sdn Bhd

afes.com.my



ABOUT US

INCORPORATED IN 2013

Alam Flora Environmental Solutions Sdn Bhd (AFES) (formerly known as DRB-HICOM Environmental Services Sdn Bhd), is a wholly-owned subsidiary of Alam Flora Sdn Bhd (Alam Flora).

It offers holistic environmental solutions to various corporations, government agencies and institutions through comprehensive environmental services in support of sustainable development. AFES has diversified its businesses and services through innovation, into several distinct core businesses, beyond waste solution.



CERTIFICATIONS & AWARDS

Having garnered recognition and accolades over the years, AFES is more motivated than ever to continue improving and polishing our services for the people, and for the betterment of the solid waste and environmental industry when it was honoured with awards and recognition for work done through the years.

Certified with ISO 9001, ISO 14001 & ISO 45001



AFES AWARDED:



**BEST ENVIRONMENTAL
IMPACT AWARD 2019**

*EUROPA AWARDS
SUSTAINABILITY EUMCCI 2019*



**EXCELLENCE IN FACILITIES
MANAGEMENT 2020**

*GLOBAL BUSINESS
LEADERSHIP AWARDS 2020*

YOUR SUSTAINABILITY PARTNER

SUSTAINABILITY DRIVEN

AFES specialises in providing comprehensive environmental solutions to enrich the quality of life, focusing on value creation on sustainable development between human activities and the natural environment.

We strive to provide the highest quality of environmental services with sustainable impact where its customers' satisfaction, is the utmost priority.

VISION & MISSION



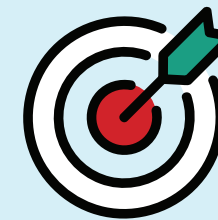
VISION

To be the leader in providing holistic environmental solutions committed to the sustainability of the environment

HEALTH, SAFETY AND ENVIRONMENT COMPETENCY

AFES prioritise environmental protection and safety at work as to ensure its activities do not cause harm to anyone and the environment.

We minimise risks through sound safety practices and use of protective equipment and appropriate sustainable environmental practices.



MISSION

Aspiring smart environmental solutions
Featuring the best holistic solutions in the region
Ecopreneurship-driven principles towards sustainability
Striving for excellence

SUSTAINABLE DEVELOPMENT GOALS (SDG)

The Sustainable Development Goals (SDGs), also known as the Global Goals, were adopted by all United Nations Member States in 2015 as a universal call to action to end poverty, protect the planet and ensure that all people enjoy peace and prosperity by 2030.

The Sustainable Development Goals (SDGs) are a collection of 17 global goals and are part of the resolution 70/1 of the United Nations General Assembly, the 2030 Agenda. The goals are broad based and interdependent. The 17 sustainable development goals each have a list of targets which are measured with indicators.

AFES believes in being responsible for the sustainability of the future generations and will play an integral role in the country's environmental solutions industry. AFES is committed towards these SDGs:



OVERVIEW OF AFES

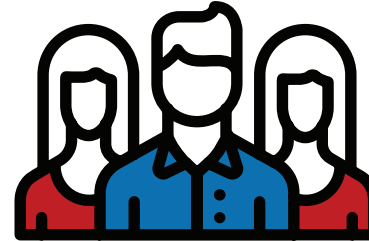
Founded in
2013



Offers holistic
environmental
solutions



Number of
employees



more than
500

Approximately
more than



400
customers

Wholly-owned
subsidiary of
ALAM FLORA
Sdn Bhd



**Environmental
Sustainability Driven**

CORE BUSINESS



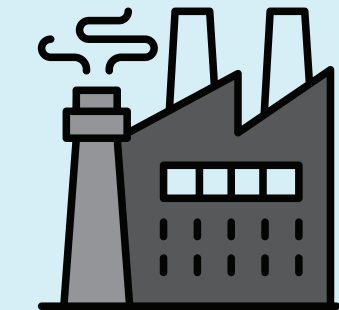
ASSET FACILITY MANAGEMENT (AFM)

- Facilities Engineering Maintenance
- Technology-Driven
- Environmental Sustainability



INFRASTRUCTURE CLEANSING AND WASTE SOLUTIONS (ICWS)

- Comprehensive Cleansing
- Waste Solutions
- Commercial & Industrial Scrap



WASTE MANAGEMENT FACILITIES (WMF)

- Landfill Management
- Leachate Treatment Plant
- Incinerator
- Transfer Station



NEW PROJECT DEVELOPMENT

- Port Reception Facilities (PRF)
- Treatment, Storage & Disposal Facility (TSDF)

ASSET FACILITY MANAGEMENT (AFM)

AFES offers effective management on the system processes and practices of all technical, mechanical, electrical, civil, structural and architectural engineering facilities, within the premises. It operates at an optimum cost and efficiency, without compromising on safety and quality of life and natural environment.

FACILITY ENGINEERING MAINTENANCE

HARD SERVICES



CIVIL & STRUCTURAL

Dealing with the maintenance of the physical and naturally-built environment.



MECHANICAL

A set of structures and components that make up the structure of the internal systems to improve the living standards and comfort.



ELECTRICAL

Specialised in work-related construction primarily on the installation, and maintenance of electrical systems.



FIRE FIGHTING SYSTEM

Managing the system of equipment used to prevent, extinguish, localise, or block fires in enclosed spaces.



SOFT SERVICES



HOUSEKEEPING SERVICES

Provides higher standards on cleaning & hygiene performance of cleaners as Environmental Technician (ENVIROTECH).



LANDSCAPING & GROUND CARE SERVICES

Provides design, consultancy and ground services from experienced landscape architects and horticulturists.



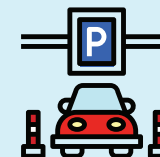
PEST CONTROL

AFES professional pest management services covers to protect storage pest - Weevils, beetle, ants, mosquito and etc.



EVENT MANAGEMENT

Offers value-added services on creation and development of small and/or large-scale corporate events such in a specific premises to our clients.



PARKING & TRAFFIC MANAGEMENT

Provides service on consultancy, planning, control and reduce the number of parking spaces required in a particular situation, providing a variety of economic, social and environmental benefits.



WASTE MANAGEMENT & RECOVERY SERVICES

The aim is to reduce the amount of waste generated, thereby prolonging the lifespan of current landfills and, optimising the value recovery of recyclable waste.



SECURITY SERVICES

Security measures that are designed to deny unauthorised access to facilities, equipments and resources and to protect personnel and property from damage or harm.

“ Sustainability can't be like some sort of a moral sacrifice or political dilemma or a philanthropical cause. It has to be a design challenge. ”

Bjarke Ingels

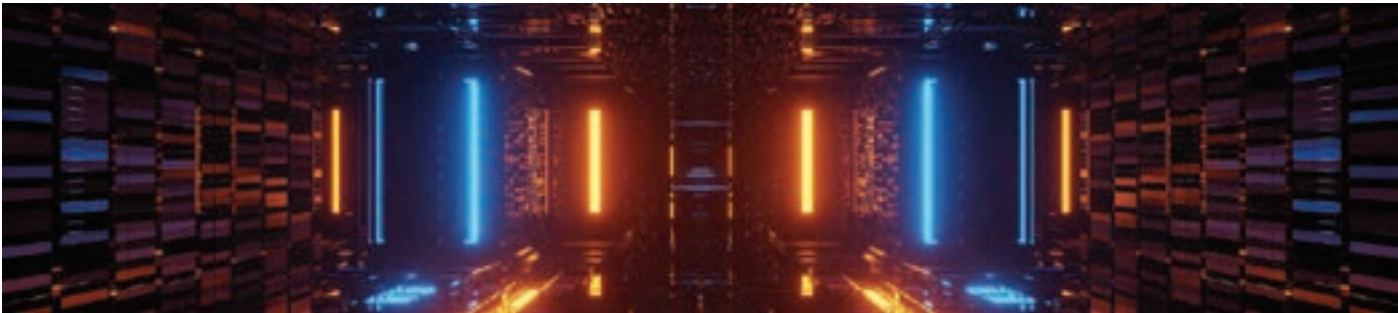
TECHNOLOGY-DRIVEN



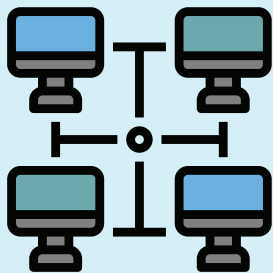
CENTRALISED MONITORING SYSTEM (CEMOS)

CEMOS is the centralised system that monitors whole AFES operation including asset monitoring system, fleet availability status, attendance monitoring system and many more.

AFES offers CAPEX to OPEX programme in order to materialise the BMS system and integration with CMMS as described below.

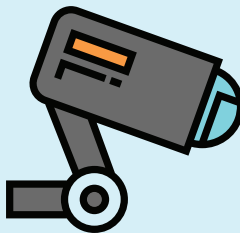


COMPUTERISED MAINTENANCE MANAGEMENT SYSTEM (CMMS)



All AFES' integrated facility management services are monitored and being maintained via CMMS, making it easier to manage work orders, maintenance tasks, assets, fleet, inventory levels, and more.

Offers building owners to transform normal practice by integration of Building Management System (BMS) with Computerised Maintenance Management System (CMMS) for Conditional Base Maintenance (CBM) based on reported conditions.



SURVEILLANCE SYSTEM

AFES manages, handles, and monitors security behaviour, activities, or information for the purpose of influencing, managing or directing activities within the premises. All system to be monitored via AFES Centralised Monitoring System (CEMOS).

ENVIRONMENTAL SUSTAINABILITY



SECURITY, SAFETY AND CRISIS MANAGEMENT

Manage the site to minimise harm and prevent injuries or fatalities to AFES' staff and customers.



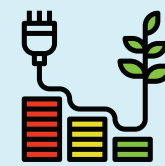
ENVIRONMENTAL QUALITY ASSESSMENT

To minimise or avoid adverse environmental effects before they occur; and incorporate environmental factors into decision-making.



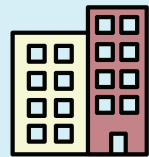
PROJECT MANAGEMENT

A procedure of initiation, planning, execution, regulation and closure as well as the guidance of the project team's operations towards achieving the goals within the set scope, time, quality, budget and standards.



ENERGY & UTILITIES MANAGEMENT

Includes planning and operation of energy production and energy consumption units to resource conservation, climate protection and cost savings, while the users have permanent access to the energy they need.



BUILDING FACILITY CONDITION ASSESSMENT (AUDIT)

Evaluates the condition of a facility's envelope performance, structural foundation and superstructure, and mechanical systems, including indoor heating and cooling.



CAPEX TO OPEX

AFES offers capital expenditure (CAPEX) to operating expenses (OPEX) programme to reduce operating expenses without causing a significant drop in quality or production output.

“ Sustainability is no longer about doing less harm. It's about doing more good. ”

Jochen Zeitz

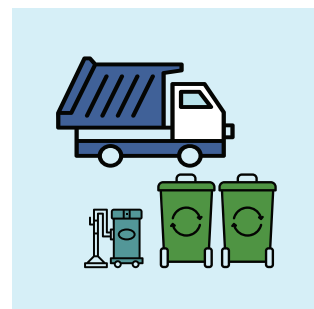
INFRASTRUCTURE CLEANSING & WASTE SOLUTIONS (ICWS)

AFES offers effective cleansing and all type of waste solutions including control, treatment, generation, storage, collection, transfer and transport, processing and proper disposal of wastes. Recycling initiative is one of the solutions offered in meeting the government's goal of reducing recycling waste sent to landfills, to more than 40 per cent by 2025.

COMPREHENSIVE CLEANSING

CLEANSING SERVICES

Provides total environmental solution for public or private event organisers and organisational structures and facilities, in ensuring the cleanliness of the area towards achieving sustainability.



WASTE MANAGEMENT SOLUTION

To accommodate the needs of industrial, commercial and institutional (ICI), AFES provides a one-stop centre for solid waste solutions.



BIN MANAGEMENT

Sales of bin consist of two types of bin:

- Waste bin (for solid waste collection)
- Recycle bin (for recyclable waste)



WASTE SOLUTIONS

RECYCLING FACILITIES



MATERIAL RECOVERY FACILITY (MRF)

All collected recyclable items are sorted and processed at the facility before being shipped out or sold to major factories for recovery purposes.



FASILITI INOVASI KITAR SEMULA (FIKS)

FIKS is an education centre for the public to learn about recycling processes and waste recovery.

It aims to promote 5R (refuse, reduce, re-use, recycle and recovery) to Malaysians, as well as to help reduce recyclable waste sent to landfills.



ANAEROBIC DIGESTER

Anaerobic digestion is the process by which organic matter such as food waste is broken down to produce biogas and bio fertiliser. At AFES, biogas are turned to electricity for building usage.



ECO-GREEN

Converting green waste to by-products which reduces waste to the landfill and supporting circular economy.

By-products from Eco-Green waste:

- Wood chip
- Bio Char compost
- Mulch
- Mix Wood
- Wood logs

“ When you put the whole picture together, recycling is the right thing to do. ”

Pam Shoemaker, Author

RECYCLING INITIATIVES



ELECTRONIC WASTE PROGRAMME

To create an 'e-waste free' environment which involves active participation by the local residence and community for Klang Valley area.



3R ON WHEELS (3ROW)

A mobile recycling unit that promotes awareness on 3R and, collects recycled items on the move. It caters towards schools, government & private offices and public events.



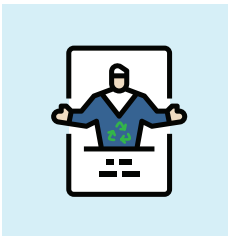
BUY BACK CENTRE

AFES operates 13 Buy Back Centres which act as collection points for recyclable items in Kuala Lumpur, Putrajaya and Pahang.



RECOVERED USED COOKING OIL (RUCO)

A programme designed to enable efficient collection of used cooking oil to be recovered into biodiesel by purchasing it with competitive purchase price, cash incentives and on request basis collection.



ECO DUTA

AFES has appointed sustainable partners as its mini-ambassadors, collecting recyclables in the Klang Valley area as to promote 5R activities. It helps develop new circular economy entrepreneurs based on sustainability and common prosperity (wealth sharing).



REWARDS@S

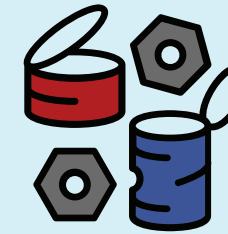
A digital technology infused programme which uses bar-coding system for collection of reward points.

It is fully equipped with, user-friendly bin facility and serves as a temporary collection point and storage, that is safe for the recyclables.

“ We do not inherit the Earth from our ancestors; we borrow it from our children. ”

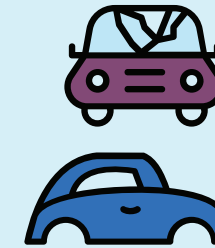
Native American Proverb

INDUSTRIAL SCRAP



COMMERCIAL & INDUSTRIAL SCRAP

To facilitate a proper disposal for consumption activities such as parts, components, building supplies and surplus materials.



END OF LIFE VEHICLE (ELV)

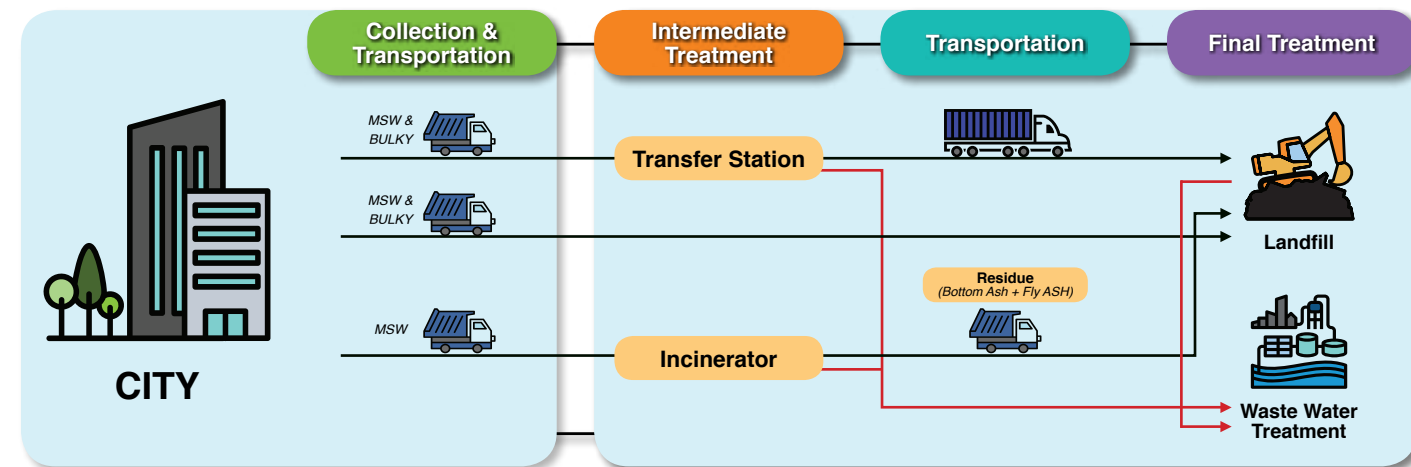
Collection, audit, dismantle, and proper disposal and handling, the stockpile of ELV.



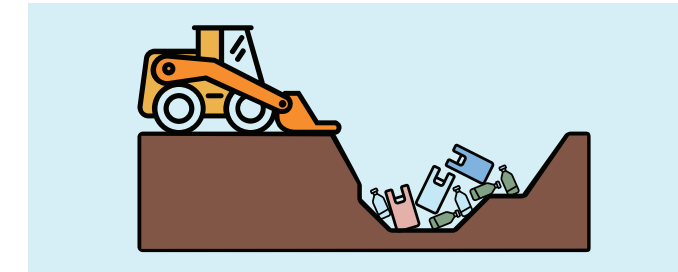
WASTE MANAGEMENT FACILITIES (WMF)

With varieties of technologies and waste facilities, AFES offers holistic environmental solutions with over 20 years of experience.

WASTE MANAGEMENT OVERVIEW

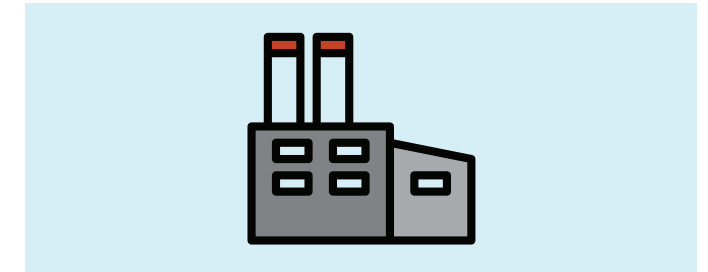


AFES FACILITIES



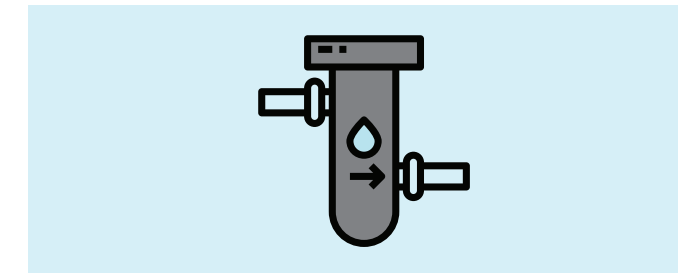
LANDFILL MANAGEMENT

- More than 10 years of experience in managing sanitary and non-sanitary landfills
- Disposal procedures to provide zero harmful impact to the environment
- Comply with local rules and regulations
- Certified with ISO9001, ISO14001, ISO45001



INCINERATOR

- A facility to treat solid waste through thermal treatment technology, to convert solid waste into bottom ash and fly ash
- AFES uses own integration of technology by in-house expertise to treat Malaysia's type of waste compositions.
- AFES' incinerator operation:
 - Pulau Pangkor Incinerator (20 tonne/day)
 - Cameron Highlands Incinerator (40 tonne/day)
- Comply with EQA 1974, Clean Air Regulation, 2014



LEACHATE TREATMENT

- Caught in the collection point, it undergoes special treatment of waste water at the Leachate Treatment Plant
- Biological and chemical treatment process complies with DOE's requirement
- Comply with EQA 1974, Control of Pollution from Solid Waste Transfer Station and Landfill regulation 2009.



TRANSFER STATION

- A facility for household waste collection which is compacted into container and then sent to landfill for final disposal
- Managed the biggest capacity waste facility transit in Asia (2500tonne/day)
- Comply with local rules and regulations
- Certified with ISO9001, ISO14001, ISO45001

NEW DEVELOPMENT PROJECTS

AFES new development projects are driven towards sustainability and innovation. These are the projects to maximise its waste solutions capabilities while maintaining environmental sustainability.

PORT RECEPTION FACILITIES (PRF)

The Port Reception Facilities (PRF) is an integrated on-site facility handling all types of waste in the port including sea-going vessels generated waste which are categorized into three segments particularly scheduled waste, solid waste and sewerage.

Subscribing to MARPOL Convention 73/78, the PRF in Northport is the first of its kind in Malaysia. With the establishment of on-site PRF, the waste in Northport will undergo pre-treatment processes prior to proceeding to DOE licensed contractors for further recovery or final disposal at prescribed premise.

PRF scope of services:

- Waste Minimisation
- Recycling and Recovery
- Desludging and Tank Cleaning
- Sampling and Analysis
- Treatment and Disposal
- eSWIS Update
- Packaging and Labeling
- Segregation and Storage
- Advanced Notification and Waste Tracking

TREATMENT, STORAGE & DISPOSAL FACILITY (TSDf)

TSDf is a facility for treatment, storage and disposal of scheduled waste in northern region of Peninsular Malaysia, of which, disposal of scheduled waste can only be sent to facilities that have been licensed by the Department of Environment (DOE).

Located in Mukim Batu Kurau, Perak, TSDf services provide better alternative facilities adding value to its existing facilities to reduce transportation risk and sustainable impact with:

- Treatment, storage & disposal of scheduled waste
- Secured landfill
- Solidification landfill
- Physical and Chemical Treatment Plant
- Leachate Treatment Plant
- Co-processing facility
- Administration building

“ The greatest threat to our planet is the belief that someone else will save it. ”

Robert Swan, Author



WHY AFES SERVICES?

The 2030 Agenda for Sustainable Development, became priority towards AFES in offering holistic environmental solutions designated for long-term sustainability. AFES committed in creating comprehensive waste solutions and sustainability recovery for zero environmental impact and provides expertise on Asset Facility Management, Infrastructure Cleansing and Waste Solutions and Waste Management Facilities.

With a pool of experienced and skilled staff, AFES minimise risks through sound safety practices and use of protective equipment and appropriate sustainable environmental practices. We have the expertise to create value for clients and addressing the challenges in creating a fine balance between economic development and environmental sustainability.



CONNECT WITH US!

Our Environmental Solution Specialist will be in touch as soon as possible to discuss your needs.

P: +603-7803 0518 TF: 1-800-88-3437 F: +603-7803 0137 E: info@afes.com.my



AFES Sdn Bhd



[afessdnbhd](https://www.instagram.com/afessdnbhd)



AFES Sdn Bhd



www.afes.com.my



AFES Sdn Bhd

